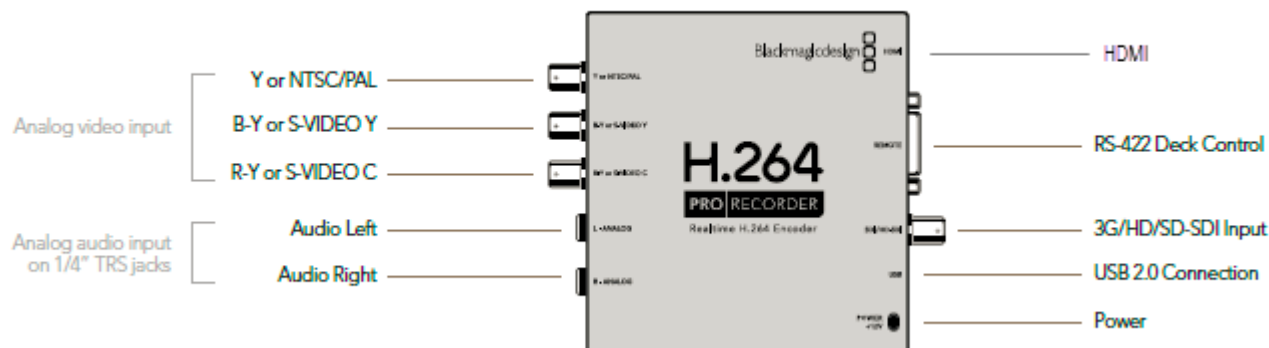


# BLACKMAGIC H.264 PRO RECORDER

## DESCRIPTION

The H.264 Pro Recorder is professional quality video conversion hardware which takes the SDI, HDMI and analog output from an HD or SD video source, encodes the video and passes it to a computer via a USB input. It allows you to capture from HDCAM, Digital Betacam, Betacam SP, DVD players and more.



## PROS

- Video quality
- Video encoded by device – suitable for InTheAction use
- Flexibility of camcorder choice (HDMI, Analog in)
- SD / HD-SDI Input for TV-Signal

## CONS

- Latency of displaying image on screen
- Needs power supply
- Cost

## BUDGET

Approximately \$450 excluding the price of the camera.

## EXAMPLE OF USE CASES

This device is used in any situation where you want to use a tapeless camcorder to provide a live video stream to Dartfish. It is additionally used in capture of broadcasted events.

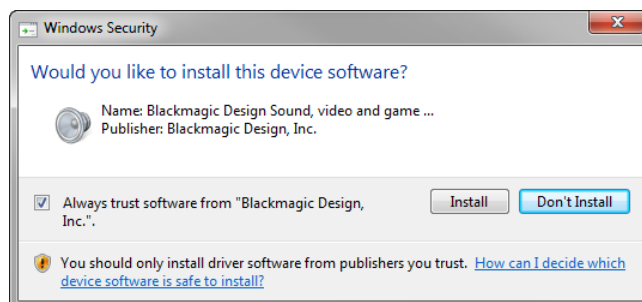
## SETTING UP THE H.264 PRO RECORDER FOR USE WITH DARTFISH

### Software installation

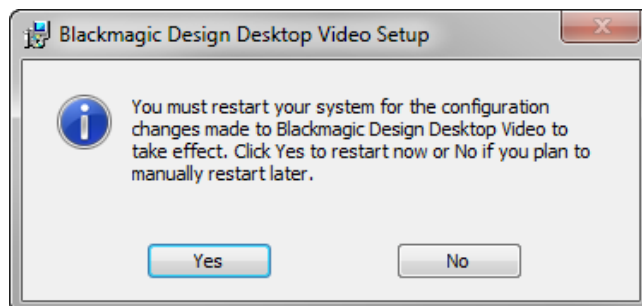
The encoder requires Desktop Video software provided by Blackmagic design for its initial configuration

- 01 Do not connect the device before installing the software
- 02 Go to our Customer Care portal to obtain the Blackmagic Desktop Video software: (<http://support.dartfish.com>)
- 03 Double click on the file you downloaded in order to start the installation.
- 04 The installation process is straight forward, just follow the onscreen instructions

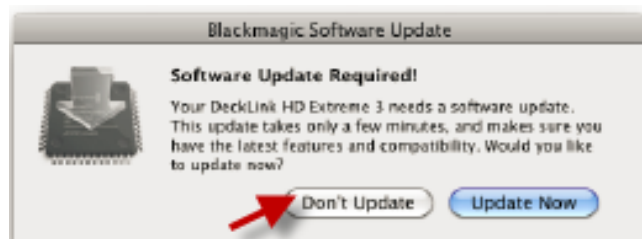
- 05 When prompted by Windows Security, ensure that you select "Always trust software from Blackmagic Design Inc" and then click the Install button



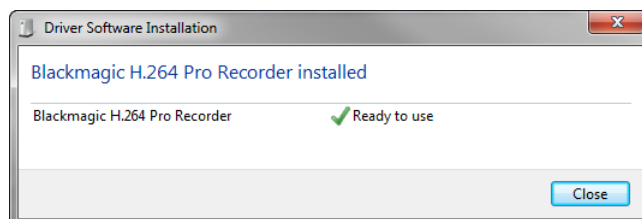
- 06 Once the installation is done, you will be asked to restart your machine. You should do this before continuing.



- 07 **IMPORTANT:** If you get a pop up window asking you to update the software, click **Don't Update**



- 08 Now connect the Blackmagic H.264 pro Recorder device to your camera and your PC and turn on the camera. When the USB cable is plugged into the PC for the first time, Windows will look for the correct driver to install. Wait for the driver installation to complete then click **Close**



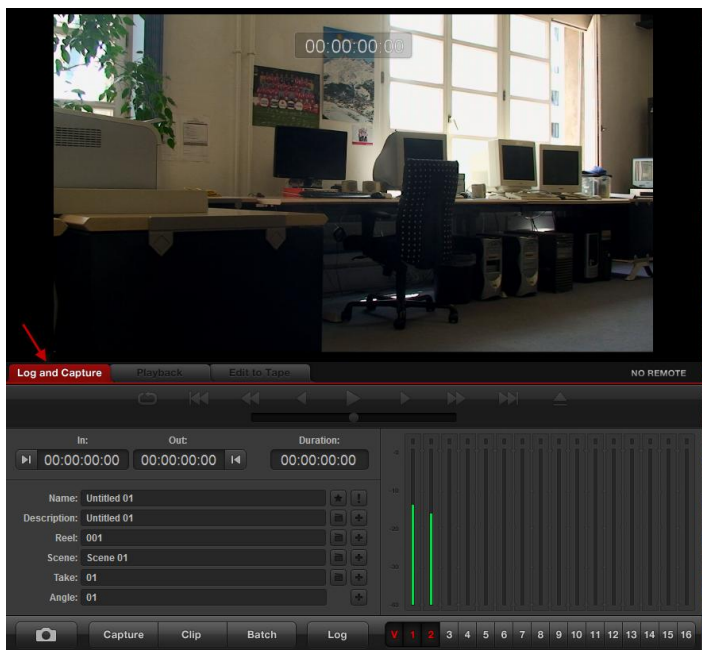
## Video stream check

Before trying to use the device with Dartfish, you should check that a video stream is being received by your computer:

- 01 Launch the **Blackmagic Media Express** software. This was installed with Blackmagic Desktop Video software
- 02 Select the **Device** menu and check that the **H.264 Pro Recorder** is listed



- 03 Then click the **Log and Capture** tab. Do you have a live video stream? If not, see the trouble shooting section below.



## Dartfish setup

When a successful stream is received you can choose the **H.264 Pro Recorder** as a capture device in any of Dartfish's video recording tools (Video Recorder, InTheAction, live Tagging)



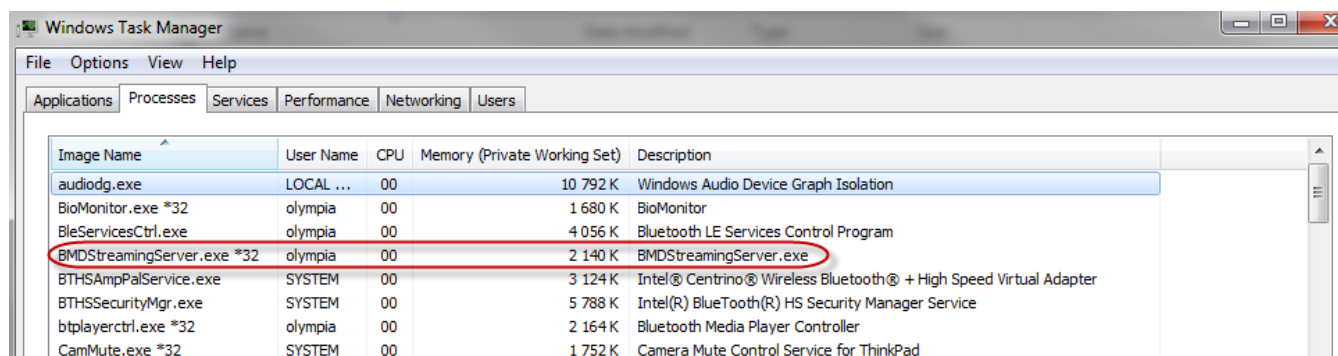
## TROUBLESHOOTING

### I can see a video stream in Blackmagic Media Express but not in Dartfish

- 👉 Do you have Dartfish 7 or newer? Earlier versions cannot use the Blackmagic Pro recorder
- 👉 Check that the Desktop Video is installed and has not been updated to a newer version. If necessary, uninstall and reinstall the version indicated by Dartfish.

### I cannot see a video stream in Black Magic Media Express

- 👉 Check all connections and that the device is connected to power and your camera is switched on
- 👉 Use Windows Task Manager to check that BMDStreamingServer.exe is running:



If not, it can be started by restarting Windows.

### My image keeps disappearing every few minutes

- 👉 This may be because the camera is set to auto power off. Check the power settings of your camera.